

Guide



MORERA
MUSEU D'ART MODERN
I CONTEMPORANI DE LLEIDA





Visit guide

The MORERA

The collection

The building

Accessibility

Basic information

The MORERA

The MORERA. Modern and Contemporary Art Museum of Lleida is a space for preserving, discovering and disseminating the art of our time.

It is a museum that allows visitors to explore different artistic trends through a set of exhibitions and activities that have Lleida as a reference point.

Activity
and exhibition
schedule

Promoting
research

Discovering
our artistic
heritage

From Ponent
to the world





**The MORERA is an open space
for debating and reflecting critically
on art and culture.**

**A museum that wants to count
on the complicity of its audiences
to generate cultural experiences
and bring about social transformation.**

**A museum
in the hands
of all**

**A collection
with diverse
narratives**

**A space
of enjoyment and
creative discovery**

**A new
headquarters**

The collection

The MORERA's collection is comprised by more than 5,000 works of art, created between the late 19th century and the present day.

A benchmark collection for explaining and understanding modern and contemporary creations.

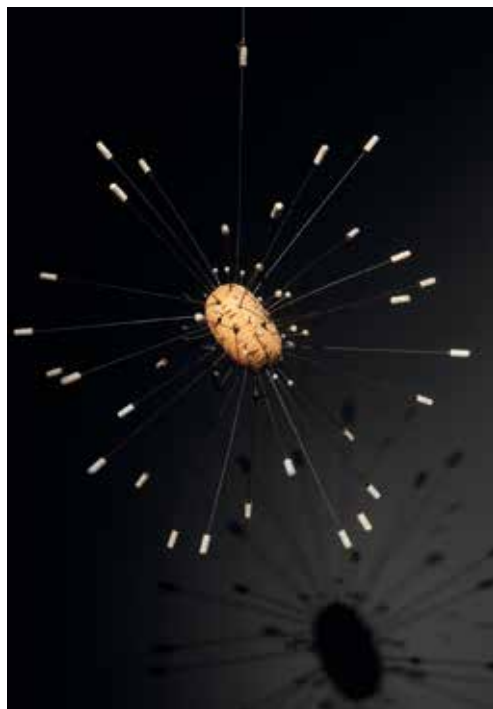
**Multiple
artistic
languages**

**A living
and accessible
collection**

**A representation
of social diversity**



Xavier Gosé
Jardí d'hivern, 1912



Leandre Cristòfol
Harmonia Estel·lar (Ralenti), 1957

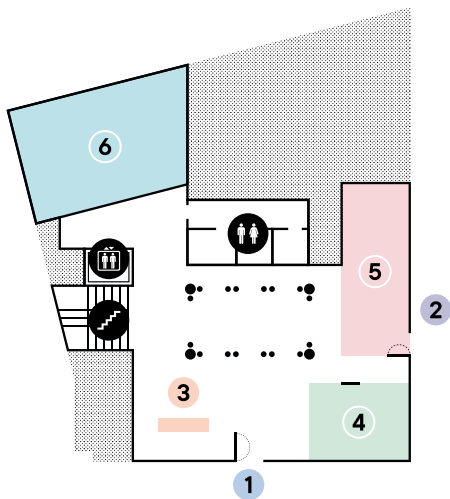


Jaume Morera
Guadarrama, 1891-1897



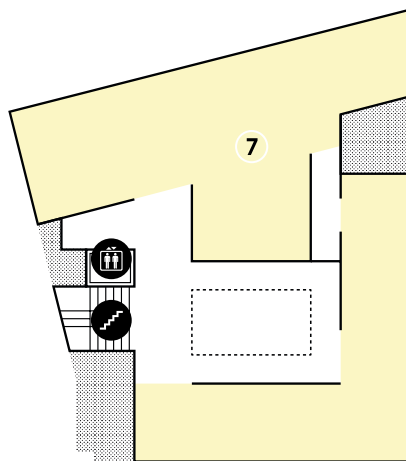
Antoni Pinent
QR CODE/FILM [#2], 2017

The building



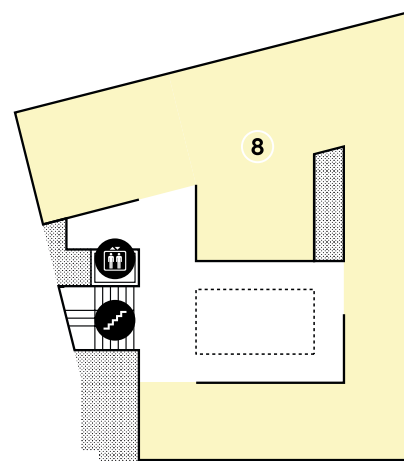
Ground floor

- 1 Entrance. 2 Accessible entrance.
- 3 Reception / Information point.
- 4 Shop. 5 Atri digital.
- 6 Tanneries.



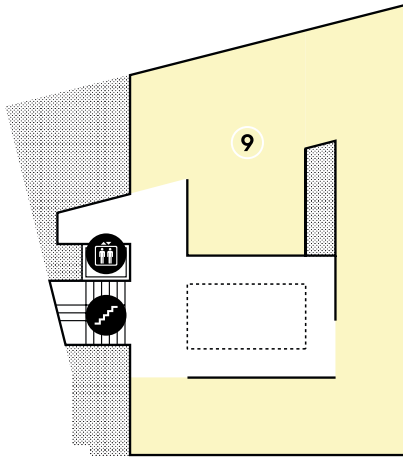
Floor 1

- 7 Exhibition room.



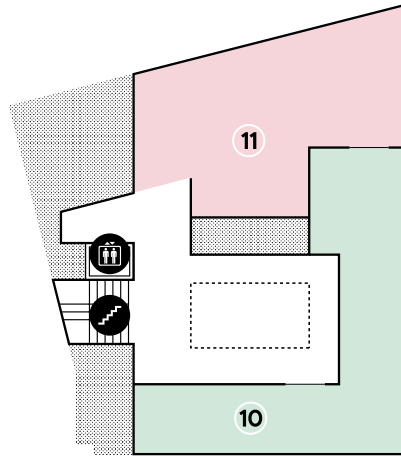
Floor 2

- 8 Exhibition room.



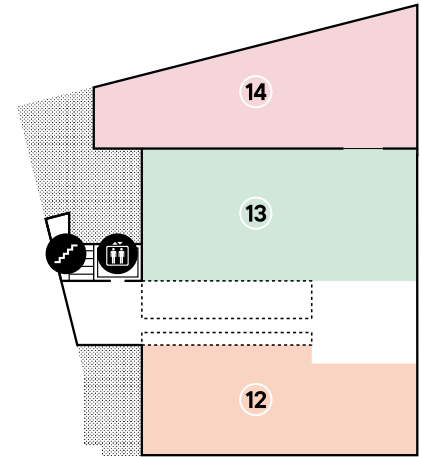
Floor 3

- 9 Exhibition room.



Floor 4

- 10 Administration and technical services.
- 11 Store room.



Floor 5

- 12 Classroom.
- 13 Function room.
- 14 Terrace.

Accessibility

The Museum wants to make modern and contemporary art accessible to the whole of society.

To achieve this, it places people and social diversity at the centre of its activity while supporting the universal right to culture.

For more information: publicsmorera@paeria.cat



**Magnetic loop
audioguide service**



**Inclusive, accessible
toilets with baby
changing facilities**



**Accessible
signage**



**All floors
can be accessed
via stairs and/or lift**

Basic information

**The museum is located
on Rambla de Ferran, 13
in Lleida**

Opening hours

Winter (from 1 October to 31 May)

Tuesday to Saturday, from 10 AM–2 PM and 4–6 PM

Sundays and public holidays, 10 AM–2 PM

Summer (1 June to 30 September)

Tuesday to Saturday, from 10 AM–2 PM and 5–7 PM

Sundays and public holidays, 10 AM–2 PM

Closed

1 January, 6 January, 25 December, 26 December



Prices

General ticket: €5

Concession tickets*: €2.50a

Free entrance*: first Tuesday of each month,
11 May, 18 May, Night of the Museums,
11 September and 29 September

* More details available at: morera.paeria.cat/en/visita

MORERA. Modern and Contemporary Art Museum of Lleida.

Rambla de Ferran, 13. 25007 Lleida
t. 973 700 419. mmorera@paeria.cat



MORERA
MUSEU D'ART MODERN
I CONTEMPORANI
DE LLEIDA

